



When You're the Swiss Army Knife

CACNC
Taking Child Abuse
Interventions to New
Heights 2023



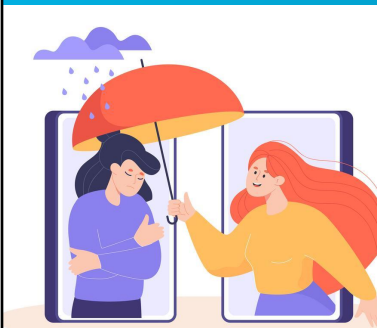
5 Advocacy Tools



Accord Presentation



Cultivating Empathy



"Empathy, the most powerful tool of compassion, is an emotional skill set that allows us to understand what someone is experiencing and to reflect back that understanding."
Brene Brown, Atlas of the Heart

Exploring the
Blade:

Cultivating Empathy

Accord Presentation





Cognitive Empathy

Affective Empathy

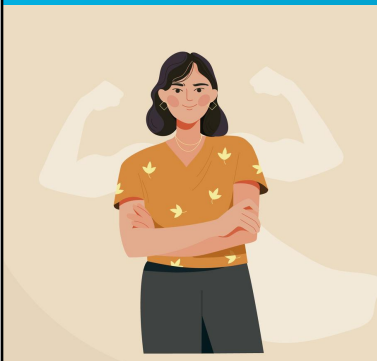


Tending to the Blade - Cultivating Empathy:

What do I need to tend to with this blade? What is one practical and small thing I can do this week towards accomplishing this?



Empowering Clients



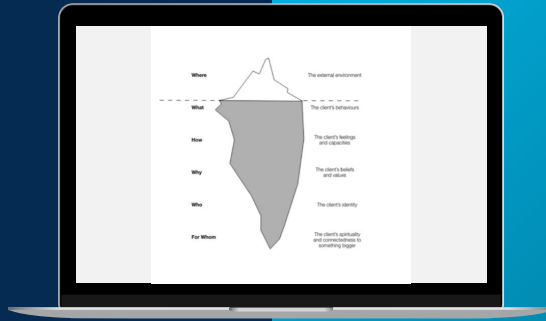
"There is tremendous dignity in claiming appropriate power and control over one's life". Judy Stewart

Exploring the Blade:

Empowering Clients

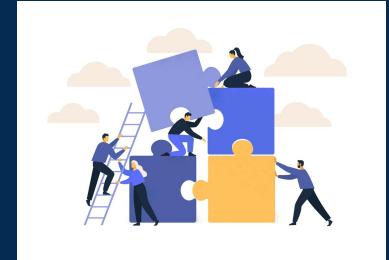


Nurturing Self-Understanding: Dilts' Logical Levels



Co-Create a Platform

- Boundaries
- Competence
- Choices
- Community



Tending to the Blade - Empowering Clients:

What's one hope you have for the caregivers in your advocacy practice right now?

slido



Navigating Crisis



"In every crisis, doubt or confusion, take the higher path - the path of compassion, courage, understanding and love."
Amit Ray, *Nonviolence: The Transforming Power*

Exploring the
Blades:

Navigating Crisis

Accord Presentation



- Understanding trauma & grief and how it presents in children and adults
- Co-plan and navigate to 'safe spots'
- Communications - Clear, concise and circles-back
- Celebrate small achievements
- Stay curious and flexible

Accord Presentation



**Tending to the Blade
- Navigating Crisis:**

Neighbor chat - What do I need to build my capacity to navigate crisis?

Accord Presentation



Engaging Community Partnerships



**"There is no power for change greater than a community discovering what it cares about."
Margaret J Wheatley**

Exploring the Blade:

Engaging Community
Partnerships



- Regular collaborative meetings
- Active relationship building
- Accountability for ethical and respectful communications
- Honoring professional expertise and scope of practice
- Defining differing roles
- Listening to fellow advocates with curiosity and openness

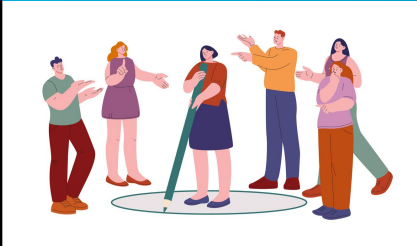




Tending to the Blade - Engaging Community Partnerships:

Neighbor chat: Who needs to be, 'at the table,' in a meaningful way who isn't?


Accord Presentation ••••



ACCORD

Nurturing Professional Boundaries

••••




On compassionate people. 'They say no when they need to, and when they say yes, they mean it. They're compassionate because their boundaries keep them out of resentment.'

Brene Brown, Atlas of the Heart

Exploring the Blade:


Nurturing Professional Boundaries

Accord Presentation ••••



- Examine Your Motives
- Recognize the Power You Bring
- Know Your Needs
- Cultivate Character
- Humbly Surrender
- Notice when shame has its' hooks

Accord Presentation ••••



Tending to the Blade - Nurturing Professional Boundaries:

Where am I maintaining productive professional boundaries? Where are things a bit wobbly? What do I need to stabilize them?

Accord Presentation

• • • •



ACCORD

C3 - Swiss Army Knife
Grace Stewart

Accord Presentation

• • • •



ACCORD

Thank you!

grace@accord.llc

Accord Presentation

• • • •